

Fluid-o-Tech magnet drive gear pumps MG300 series



The MG300 series magnet drive gear pumps are compact precision performance pumps for a wide range of specialized applications. Thanks to the improved design, the MG300 series grant a more accurate and uniform delivery regardless of the fluid temperature. The seal less design with the magnetic transmission of the rotation is guarantee of a leak proof product. Static seals are available in PTFE™ / NBR / VITON™ / EPDM/SILICON, in order to guarantee the highest chemical compatibility with a wide range of fluids. The housing of the pump and the internal metal parts are in AISI 316 L stainless steel while gears and bush-

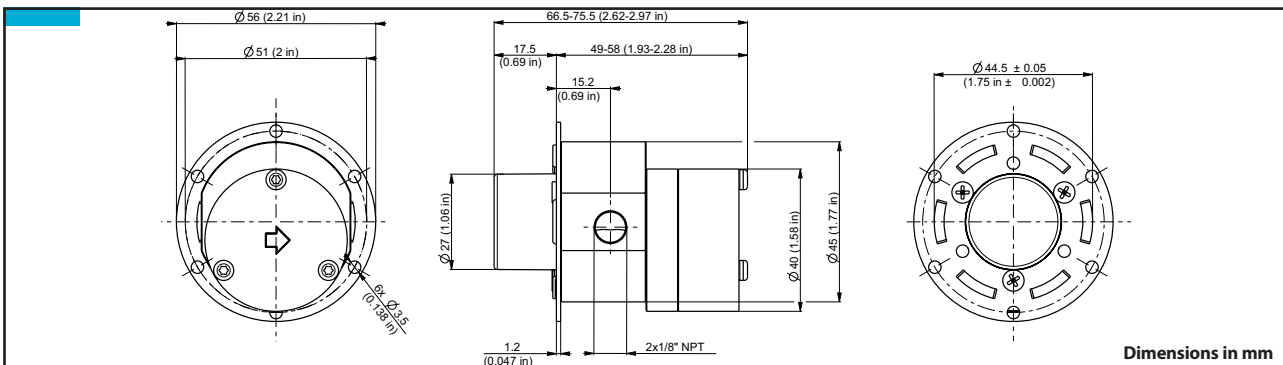
ings are available in Peek™, Ceramic Peek™ or PTFE™. In operation the MG300 series pumps are noiseless, pulsation-free and capable of handling relatively high temperature liquids (up to 120 °C or 248 °F) with low coefficient of expansion. Operation at different pressures ranges is possible thanks to a choice of materials for the magnets.

All pumps are available with:

- 1/8" GAS or NPT
- customized ports upon request
- NSF listing (PTFE™ or Silicon seals)

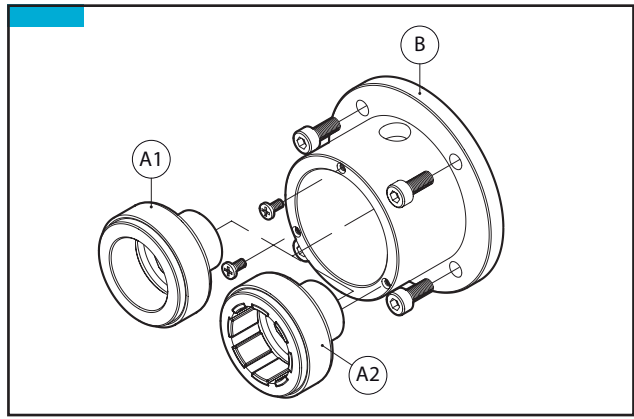
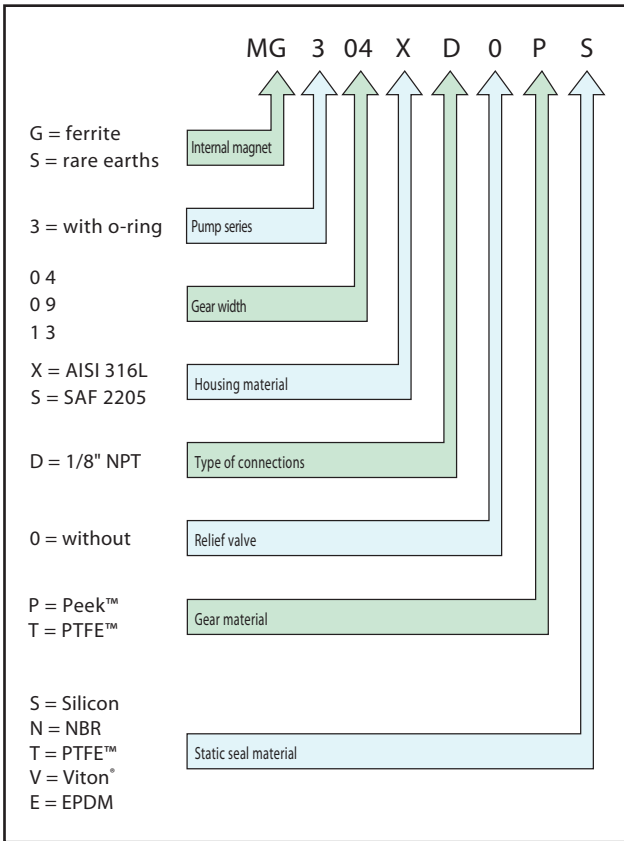


Composition materials		Technical information	
Housing	Gears	Temperature range	Max system pressure
SS	PTFE™	-45 to +50 °C / -49 to +122 °F	20 bar/290 psi
SS	Peek™	-45 to +120 °C / -49 to +248 °F	20 bar/290 psi
SS	Ceramic peek™	-45 to +120 °C / -49 to +248 °F	20 bar/290 psi

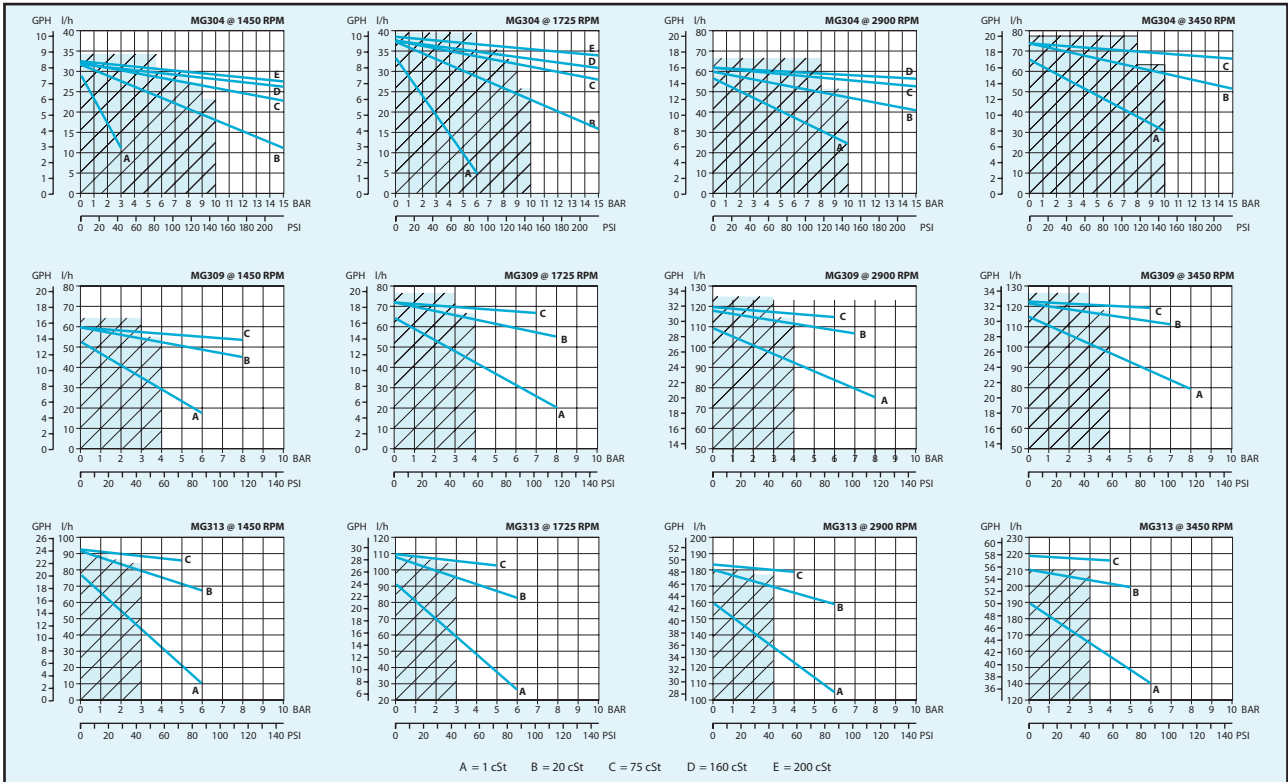


Main applications

- Medical and surgical equipment
- Hemodialysis apparatus
- Laser apparatus
- Lubrication
- Ink-jet printing systems
- Cooling systems
- Laboratory instrumentation
- Water purification and ultra-filtration
- Sampling
- Food processing equipment



Pos.	Description	Features	Code
A1	Ferrite driving magnet	6 mm bore	MGAF05S
		9 mm bore	MGAF06S
		11 mm bore	MGAF09S
A2	Rare earths driving magnet	6 mm bore	MGAS05S
		9 mm bore	MGAS06S
		11 mm bore	MGAS09S
A1 + B	Adapter kit with ferrite driving magnet	M48 motor	MGBF42S
		M56 motor	MGBF56S
		M63 motor	MGBF63S
A2 + B	Adapter kit with rare earths driving magnet	M48 motor	MGBS42S
		M56 motor	MGBS56S
		M63 motor	MGBS63S



Note: Performance beyond the broken line zone are reached with the rare earths magnets. Characteristics with water at 20°C (68 °F) and without relief valve, max vacuum 724 mmHg. Use filter before pump inlet not larger than 10 micron. Pump weight: 510 g (1,12 Lbs). Temperature requirements different from ambient temperature must be mentioned on the order. Different materials are available upon request.

Fluid-o-Tech reserves the right to alter the specifications indicated in this catalogue at any time and without prior notice.

MG3 – 04/10 Ed.

Fluid-o-Tech srl
 Via Leonardo da Vinci, 40
 20094 Corsico, Milano, Italy
 Tel. +39 02 8917071
 Fax +39 02 89170799

Fluid-o-Tech Int'l Inc.
 161 Atwater St.,
 Plantsville CT (USA) 06479
 Tel. +1 (860) 276-9270
 Fax +1 (860) 620-0193

Fluid-o-Tech Int'l Inc. Japan
 203, 2-17-19, Ebara, Shinagawa
 Tokyo 142-0063, Japan
 Tel. +81 (0) (3) 3783-9660
 Fax +81 (0) (3) 3783-9661

Fluid-o-Tech Asia (Beijing) Co., Ltd
 Jingwei Industrial Zone,
 Beifang Huairou, Beijing, 101400, PRC
 Tel. +86 (0) (10) 61684650
 Fax +86 (0) (10) 61684651

Fluid-o-Tech magnet drive gear pumps MG200 series



The MG200 series magnet drive gear pumps are compact precision performance pumps for high technology applications. The magnet drive principle provides a totally sealed pump chamber capable of handling a wide range of corrosive liquids with a high degree of safety. The housing of the pump and the internal metal parts are in AISI 316 L stainless steel and the gears are available in PTFE™ or Peek™.

In operation the MG200 series pumps are noiseless, pulsation-free and capable of handling relatively high temperature fluids with low coefficient of expansion.

The principle of the magnetic drive comprises an inner magnet embodied in the pump and connected to the driving gear, and an outer magnet connected to the motor shaft.

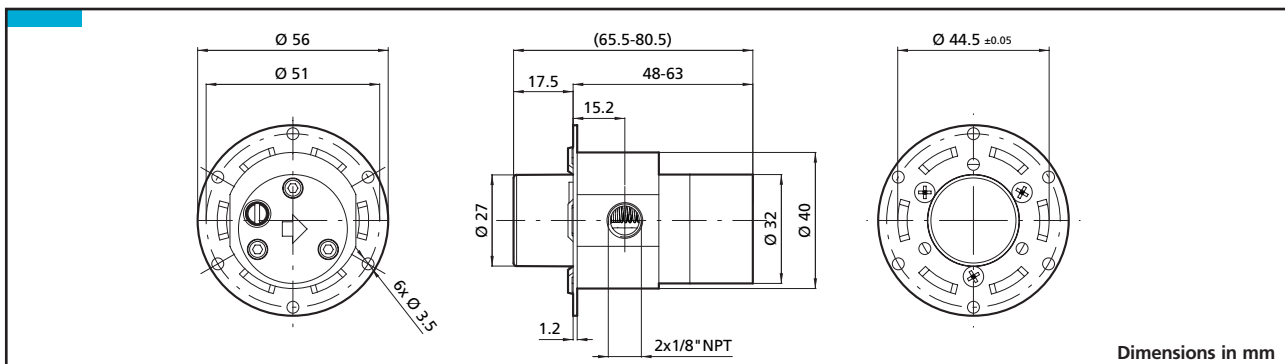
The pole-to-pole alignment of the two magnets provides the driving motion to the pump.

Decoupling will occur when the pump load exceeds the maximum coupling torque provided by the alignment of the two magnets.



- 1/8" GAS or NPT ports
- Relief valve available upon request
- NSF listed pumps for potable water

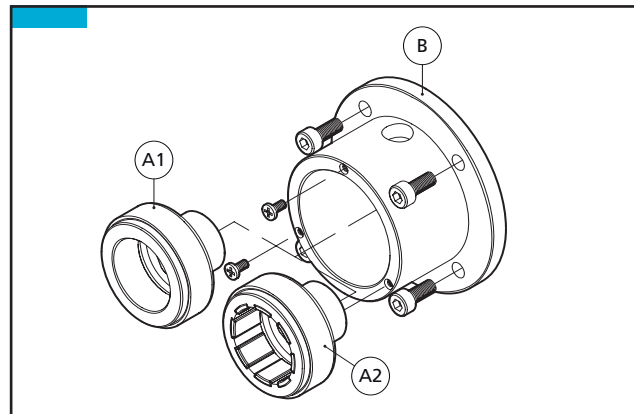
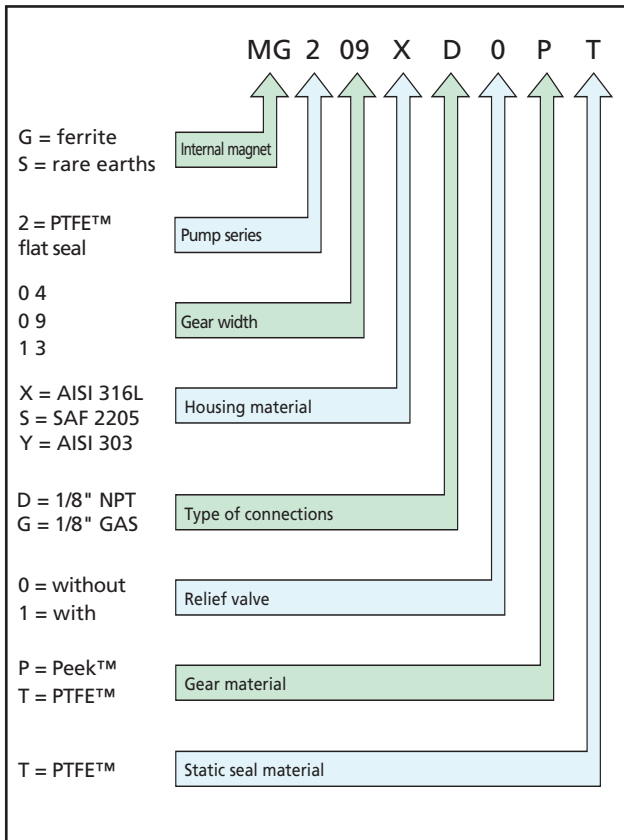
Composition materials			Technical information	
Housing	Gear	Seal	Temperature range	Max system pressure
316 L SS	PTFE™	PTFE™	-45 to +50 °C / -49 to +122 °F	20 bar/290 psi
316 L SS	Peek™	PTFE™	-45 to +120 °C / -49 to +248 °F	20 bar/290 psi



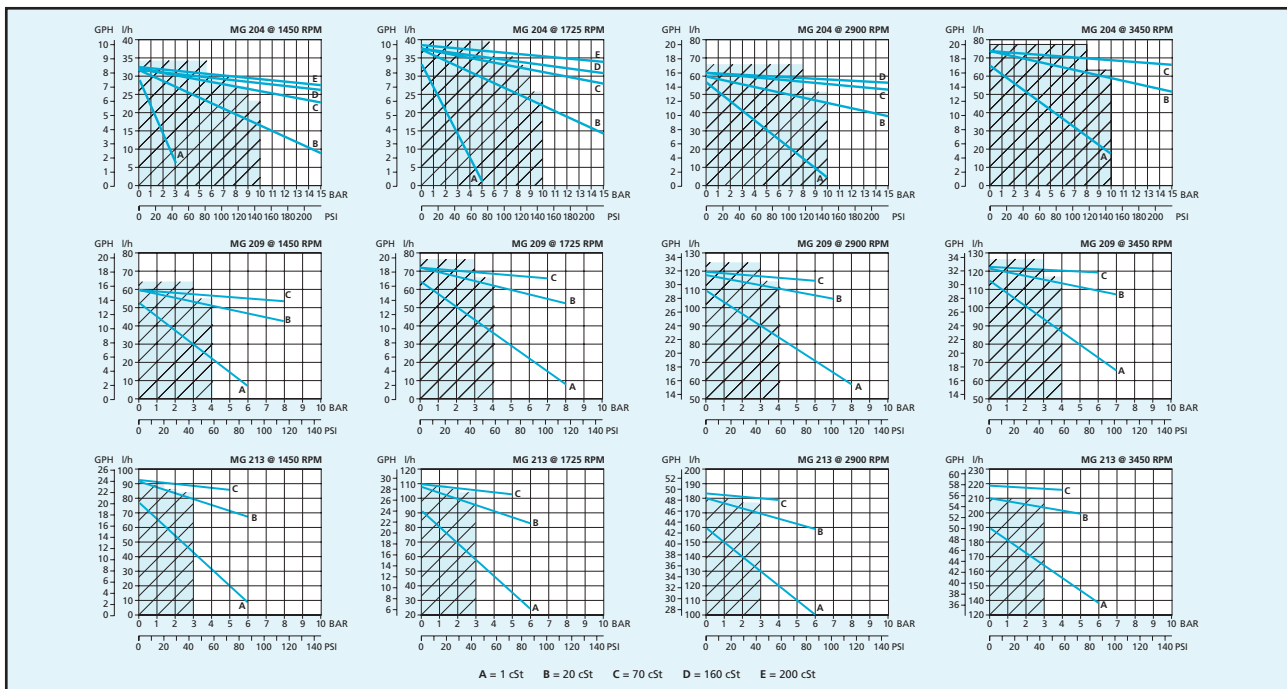
Main applications

- Medical and surgical equipment
- Hemodialysis apparatus
- Laser apparatus
- Lubrication
- Ink-jet printing systems
- Cooling systems
- Laboratory instrumentation
- Water purification and ultra-filtration
- Sampling
- Food processing equipment

Fluid-o-Tech magnet drive gear pumps MG200 series



Pos.	Description	Features	Code
A1	Ferrite driving magnet	6 mm bore	MGAF06S
		9 mm bore	MGAF09S
		11 mm bore	MGAF11S
A2	Rare earths driving magnet	6 mm bore	MGAS06S
		9 mm bore	MGAS09S
		11 mm bore	MGAS11S
A1 + B	Adapter kit with ferrite driving magnet	M48 motor	MGBF48S
		M56 motor	MGBF56S
		M63 motor	MGBF63S
A2 + B	Adapter kit with rare earths driving magnet	M48 motor	MGBS48S
		M56 motor	MGBS56S
		M63 motor	MGBS63S



Note: Performance beyond the broken line zone are reached with the rare earths magnets. Characteristics with water at 20 °C (68 °F) and without relief valve, max vacuum 724 mmHg. Use filter before pump inlet not larger than 10 micron. Pump weight: 400 g (0,90 Lbs). Temperature requirements different from ambient temperature must be mentioned on the order. Different materials are available upon request.

Fluid-o-Tech reserves the right to alter the specifications indicated in this catalogue at any time and without prior notice.

MG2 – 03/09 Ed.

Fluid-o-Tech srl
 Via Leonardo da Vinci, 40
 20094 Corsico, Milano, Italy
 Tel. +39 02 8917071
 Fax +39 02 89170799

Fluid-o-Tech Int'l Inc.
 161 Atwater St.,
 Plantsville CT (USA) 06479
 Tel. +1 (860) 276-9270
 Fax +1 (860) 620-0193

Fluid-o-Tech Int'l Inc. Japan
 203, 2-17-19, Ebara, Shinagawa
 Tokyo 142-0063, Japan
 Tel. +81 (0) (3) 3783-9660
 Fax +81 (0) (3) 3783-9661

Fluid-o-Tech Asia (Beijing) Co., Ltd
 Jingwei Industrial Zone,
 Beifang Huairou, Beijing, 101400, PRC
 Tel. +86 (0) (10) 61684650
 Fax +86 (0) (10) 61684651