

Fluid-o-Tech magnet drive external gear pumps PG series



There are applications where the liquids involved are very difficult to handle and working solutions are hard to find and require a great financial investment.

The PG300 series is Fluid-o-Tech's reply to such requirements.

Made to give the same high level of performance as the MG300 series, the PG300 series pumps are built in a special grade of PPS to offer the greatest versatility and quality of material while allowing for exceptional mechanical characteristics. The gears are available in Peek and PTFE. The elastomers are available in a comprehensive range of materials to allow usage in the widest variety of applications.

The PG300 series offers mag drive coupling with ferrite or rare earths magnets.

- The pump is 100% traceable
- A built-in relief valve is available upon request
- NSF listed pumps (PTFE or Silicon seals) for potable water

Main Applications

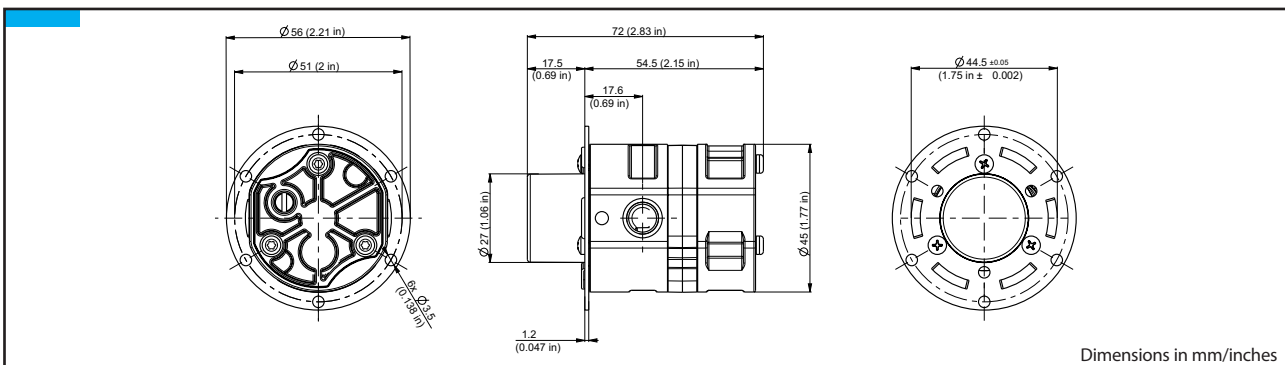
- Medical and surgical equipment
- Hemodialysis apparatus
- Laser apparatus
- Lubrication
- Ink-Jet printing systems
- Cooling systems
- Laboratory instrumentation
- Water purification and ultra-filtration
- Sampling
- Food processing equipment



Technical Information

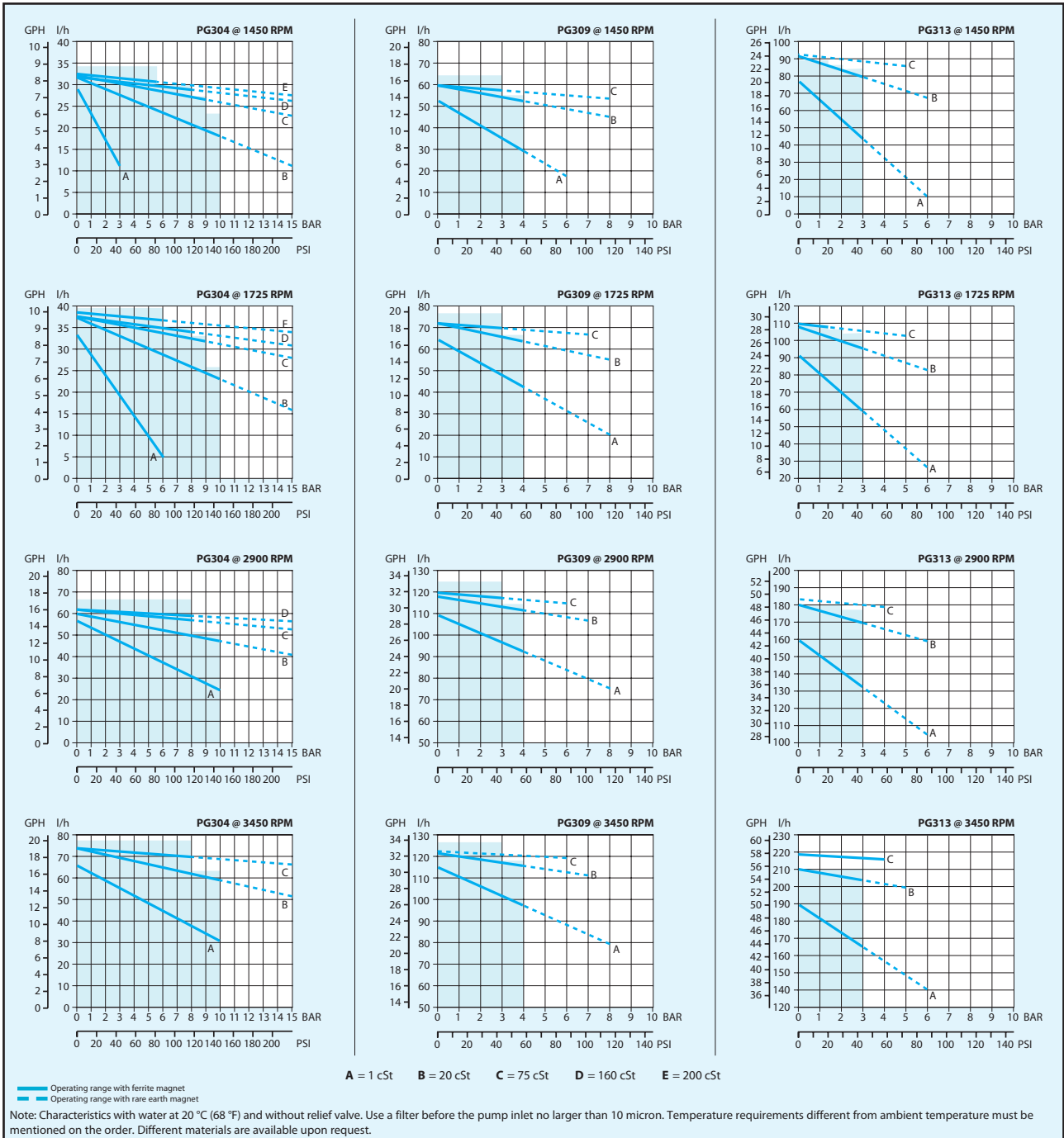
Pump housing material	PPS	Max static pressure	20 bar/290 psi
Gears and bushings material	Peek/PTFE	Temperature range	-45 to 60°C/-49 to 140°F
Ports	1/8" GAS or NPT	Max Vacuum	724 mmHg/28.5 inHg
Pump weight (PG317)	230 g (0,7 Lbs)	*Wet lift with water	~ 8 m/26.2 ft
Speed limit	5000 rpm	Max instantaneous gradient of the fluid	45°C/113°F

* Priming ability varies with operating conditions and fluid characteristics



Position	1	2	3	4	5	6	7	8	Customization
Code	PG	3	09	R	D	0	P	E	00000

Pos.	Description	Code	Pos.	Description	Code
1	Driven magnet	PG = ferrite PS = rare earths	4	Housing material	R = PPS
2	Pump series	3 = o-ring	5	Type of connections	D = 1/8" NPT G = 1/8" GAS
3	Gear width in mm (Flow rate)	04 = 4 mm (0,3 ml/rev)	6	Relief valve	0 = without 1 = with
		09 = 9 mm (0,6 ml/rev)	7	Gear material	P = Peek T = PTFE
		13 = 13 mm (0,9 ml/rev)	8	Static seal material	E = EPDM N = NBR
		17 = 17 mm (1,2 ml/rev)			V = Viton S = Silicon



Fluid-o-Tech reserves the right to alter the specifications indicated in this catalogue at any time and without prior notice.

PG3 – 10/10 Ed.

Fluid-o-Tech srl
 Via Leonardo da Vinci, 40
 20094 Corsico, Milano, Italy
 Tel. +39 02 8917071
 Fax +39 02 89170799

Fluid-o-Tech Int'l Inc.
 161 Atwater St.,
 Plantsville CT (USA) 06479
 Tel. +1 (860) 276-9270
 Fax +1 (860) 620-0193

Fluid-o-Tech Int'l Inc. Japan
 203, 2-17-19, Ebara, Shinagawa
 Tokyo 142-0063, Japan
 Tel. +81 (0) (3) 3783-9660
 Fax +81 (0) (3) 3783-9661

Fluid-o-Tech Asia (Beijing) Co., Ltd
 Jingwei Industrial Zone,
 Beifang Huairou, Beijing, 101400, PRC
 Tel. +86 (0) (10) 61684650
 Fax +86 (0) (10) 61684651