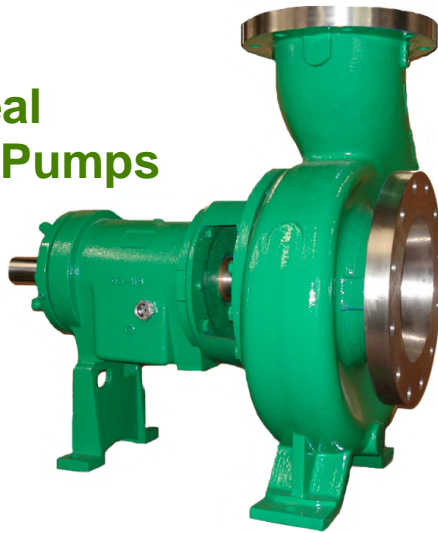


Magnatex® 3575 Series

Mechanical Seal ANSI Process Pumps



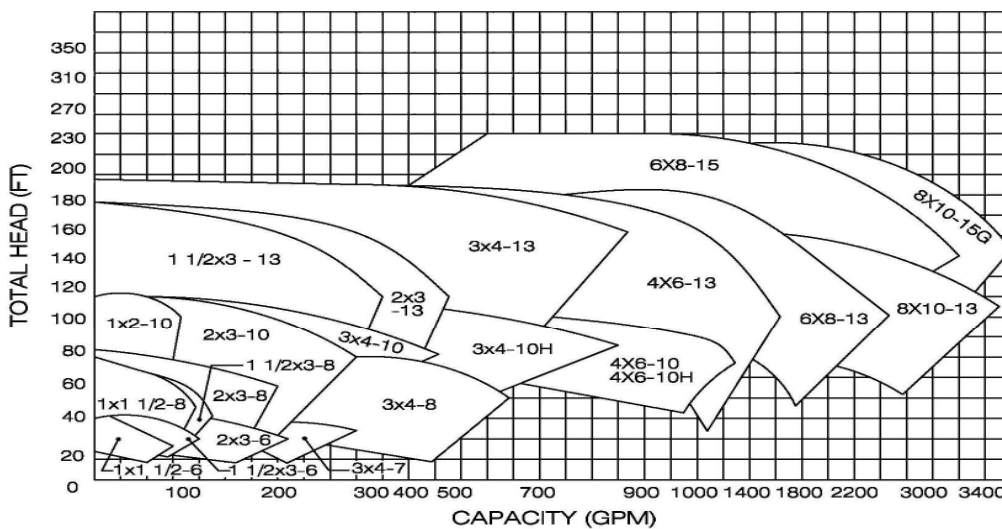
Magnatex® 3575 Series Pumps

Heavy duty, rugged, world class quality, ANSI process pumps manufactured to meet the latest ASME B73.1-2001 standard (revision of ASME B73.1M-1991). Pumps are manufactured in 29 sizes, a wide variety of materials, seal options and seal flush systems to handle almost all applications in the process industries. All Magnatex® pumps and spare parts come with a **5 year warranty** on materials and workmanship.

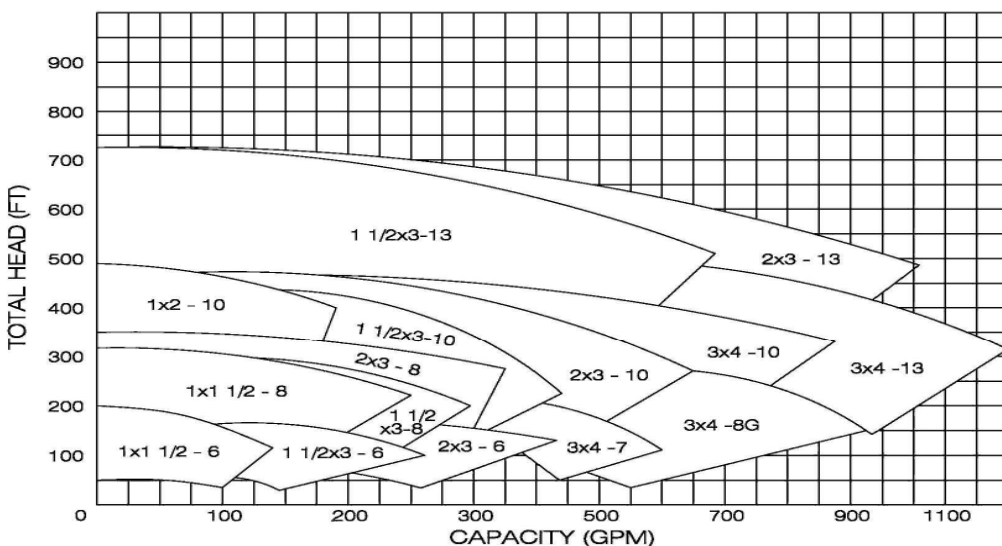
Spare Parts for Magnatex®, Goulds®, Durco® and Peerless® ANSI Pumps

Magnatex is a premier alternative, generic part supplier for all of your Goulds 3196, Durco Mark II and III, or Peerless 8196 spare parts requirements. Magnatex 3575 spare parts are 100% interchangeable with Goulds 3196 parts, 100% guaranteed. We can also take care of your Durco ANSI pump parts requirements. We guarantee that our parts will meet the original manufacturers' performance standards. Our parts department is ready to help you with your requirements 24/7. Call us today at 713-972-8666 or 1-866-624-7867.

COMPOSITE PERFORMANCE CURVES AT 1750 RPM

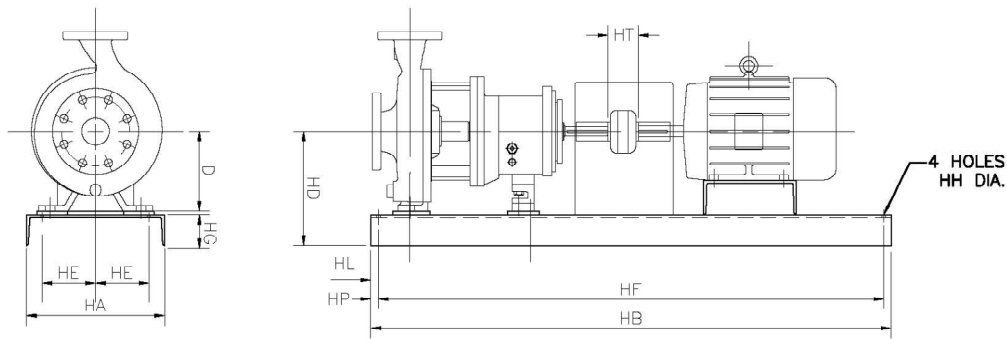


COMPOSITE PERFORMANCE CURVES AT 3550 RPM



3575 Series Specifications

- Maximum Flow..... 5000 GPM
- Maximum Head..... 720 FT
- Liquid Temp..... up to +700°F
- Max HP..... up to 300 HP
- Materials of Construction:
 - Ductile Iron, Steel, 316SS
 - CD4MCu, Alloy 20, Alloy B & C,
 - Ni-Hard, Titanium
- Flanges..... 150 LB or 300 LB
- Max Shaft Deflection.. 0.002 Inches
- Bearing Life..... 50,000 Hours



3575 SERIES BASEPLATE DIMENSIONS

NEMA Frame	Baseplate No.	HA	HB	HT	HD				HE	HF	HG	HH	HL	HP
					D=5.25	D=8.25	D=10	D=14.5						
184T	139	15	39	3.5	9	4.5	36.5	3.75	0.75	4.5	1.25
256T	148	18	48	3.5	10.5	6	45.5	4.13	0.75	4.5	1.25
326TS	153	21	53	3.5	12.88	7.5	50.5	4.75	0.75	4.5	1.25
184T	245	15	45	3.5	...	12	13.75	...	4.5	42.5	3.75	0.75	4.5	1.25
215T	252	18	52	3.5	...	12.38	14.13	...	6	49.5	4.13	0.75	4.5	1.25
286T	258	21	58	3.5	...	13	14.75	...	7.5	55.5	4.75	1	4.5	1.25
365T	264	21	64	3.5	...	13.88	14.75	...	7.5	61.5	4.75	1	4.5	1.25
405TS	268	26	68	3.5	...	14.88	14.88	...	9.5	65.5	4.75	1	4.5	1.25
449TS	280	26	80	3.5	...	15.88	15.88	...	9.5	77.5	4.75	1	4.5	1.25
286T	368	26	68	5	19.25	9.5	65.5	4.75	1	6.5	1.25
405T	380	26	80	5	19.25	9.5	77.5	4.75	1	6.5	1.25
449T	398	26	98	5	19.25	9.5	95.5	4.75	1	6.5	1.25

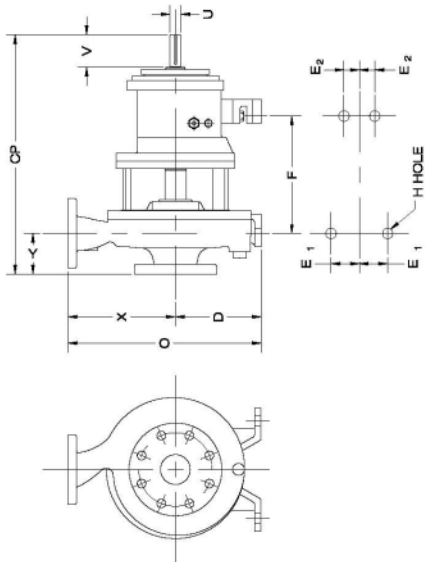
ALL DIMENSIONS IN INCHES ± 0.12"

NOT FOR CONSTRUCTION UNLESS OTHERWISE NOTED.

SUCTION AND DISCHARGE FLANGES ARE 150# FF ANSI RATED UNLESS OTHERWISE NOTED.

MAX ALLOWABLE HORSEPOWER

POWER LIMITS	RPMs		
	1200	1800	3600
S	13.2	19.8	39.6
M	40.8	61.2	122.4
L	67.2	100.8	201.6
XL	168	252	-



3575 SERIES MODEL	BORE	ds	dd	DISCH.	DIMENSIONS													WEIGHT APPROX lbs
					X	Y	X	Y	CP	O	D	F	2E1	2E2	U	V	H	
AA6	1.5	1	4	6.5	17.5	11.75	5.25	7.25	6	0	875	2.13	.625	84				
AB6	3	1.5	4	6.5	17.5	11.75	5.25	7.25	6	0	875	2.13	.625	92				
AA8	1.5	1	4	6.5	17.5	11.75	5.25	7.25	6	0	875	2.13	.625	95				
AA8	1.5	1	4	6.5	17.5	11.75	5.25	7.25	6	0	875	2.13	.625	100				
A70-7	4	3	4	11	23.5	19.25	8.25	12.5	9.75	7.25	1.13	2.63	.625	108				
A80-8	3	2	4	9.5	23.5	17.75	8.25	12.5	9.75	7.25	1.13	2.63	.625	200				
A70-8	4	3	4	11	23.5	19.25	8.25	12.5	9.75	7.25	1.13	2.63	.625	200				
A70-8G	4	3	4	11	23.5	19.25	8.25	12.5	9.75	7.25	1.13	2.63	.625	200				
A05-10	2	1	4	8.5	23.5	16.75	8.25	12.5	9.75	7.25	1.13	1.88	.625	200				
A50-10	3	1.5	4	8.5	23.5	16.75	8.25	12.5	9.75	7.25	1.13	1.88	.625	220				
A60-10	3	2	4	9.5	23.5	17.75	8.25	12.5	9.75	7.25	1.13	1.88	.625	230				
A70-10	4	3	4	11	23.5	19.25	8.25	12.5	9.75	7.25	1.13	1.88	.625	265				
A40-10H	4	3	4	12.5	23.5	22.5	10	12.5	9.75	7.25	1.13	1.88	.625	305				
A80-10	6	4	4	13.5	23.5	23.5	10	12.5	9.75	7.25	1.13	1.88	.625	305				
A80-10H	6	4	4	13.5	23.5	23.5	10	12.5	9.75	7.25	1.13	1.88	.625	305				
A20-13	3	1.5	4	10.5	23.5	20.5	10	12.5	9.75	7.25	1.13	1.88	.625	245				
A30-13	3	2	4	11.5	23.5	21.5	10	12.5	9.75	7.25	1.13	1.88	.625	275				
A40-13	4	3	4	12.5	23.5	22.5	10	12.5	9.75	7.25	1.13	1.88	.625	330				
A80-13	6	4	4	13.5	23.5	23.5	10	12.5	9.75	7.25	1.13	1.88	.625	405				
A90-13	8	6	6	16	33.9	30.5	14.5	18.75	16	9.0	2.38	4	.875	560				
A100-13	10	8	6	18	33.9	32.5	14.5	18.75	16	9.0	2.38	4	.875	670				
A110-15	8	6	6	18	33.9	32.5	14.5	18.75	16	9.0	2.38	4	.875	610				
A120-15	10	8	6	19	33.9	33.5	14.5	18.75	16	9.0	2.38	4	.875	740				
A120-15G	10	8	6	19	33.9	33.5	14.5	18.75	16	9.0	2.38	4	.875	322				

ALL DIMENSIONS IN INCHES ± 0.12" NOT FOR CONSTRUCTION UNLESS OTHERWISE NOTED.