

## Micro Centrifugal Liquid Pump Range

### Overview : Longlife Brushless Micro Pump for Liquids

The M400 series range of pumps are driven by a brushless drive motor with built in electronic controller. Constructed from precision CNC machined aluminium alloy with stainless steel tubing connectors and fitted with Viton seals as standard. Alternative seal materials and optional wetted part coatings and materials are also available enabling this pump range to resist most chemicals and solvents. The pump uses efficient push fit connectors designed for 6.0mm (S variants) or 3.2mm (K variants) flexible tubing. A 220mm electrical fly-lead is fitted as standard. A feedback wire is included, which can be used optionally, to measure pump speed/output.

### Pump Variants



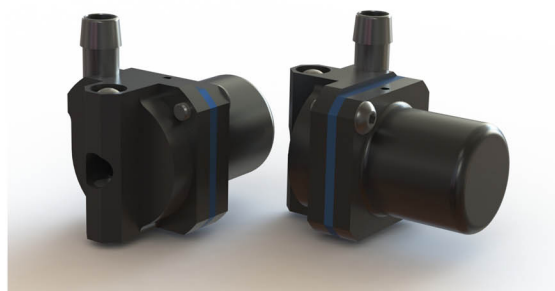
M400S - Standard pump suitable for most applications



M400K - Standard pump for small bore tubing



M400-180 - Standard pump for inline flow connection  
Available in both S and K variants



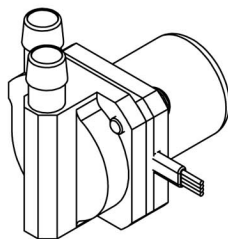
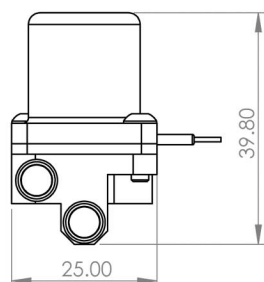
M400-SUB - Pump for submersion in pumping medium  
Available in both S and K variants

### Typical Applications

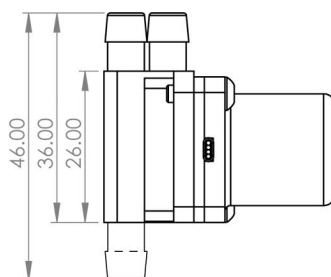
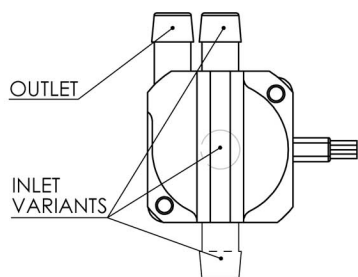
- Medical devices
- Fuel Cells
- Battery and Solar Powered Systems
- Cooling Systems
- Low Pressure Fuel Pump
- Lubrication systems

### Features

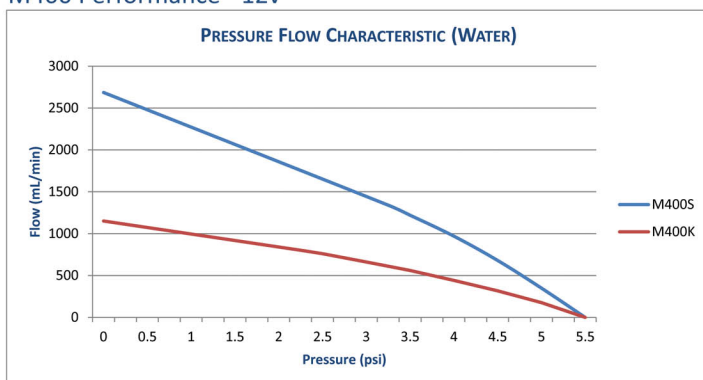
- Brushless drive motor + integral controller
- CNC aluminum alloy construction
- Quiet pulseless smooth flow
- Small size only 41 x 26 x 25 mm
- Weight 32g
- Free flow up to 2600ml per minute (water)
- Usable with solar power, PSU or batteries
- Wide range of chemical resistance



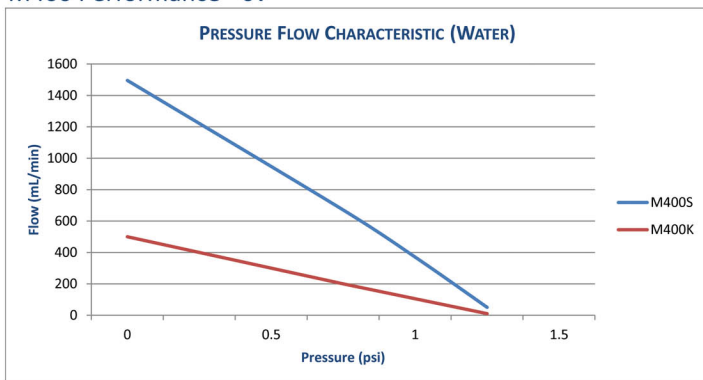
Connectors to suit 6.0mm tube (S variants)  
and 3.2mm tube (K variants)



## M400 Performance - 12v



## M400 Performance - 6v



## Materials

### Wetted Parts

- Anodised 6000 Series Aluminum
- 316 Stainless Steel
- Viton or EPDM
- Polyacetal

### Other

- Materials typical to a Brushless Motor

## Performance Data

- Small Size 25 x 26 x 40mm
- Weight 32-24 grms
- Operating Temp -20 to 100 deg C
- Smooth Pulseless Flow
- IP Rating - Standard pumps IP45  
Water Proof pumps IP67
- Noise Levels <3dB  
Measured at a distance of 1m with a 50dB ambient noise level
- MTBF Stock Pumps 10,000hrs  
Special variants available to order >100,000hrs

Variant	Input	Power	Flow	Pressure
	(V)	(W)	(ml/min)	m(Bar)
M400S	6	1.3	1495	86
	12	7.1	2685	380
M100K	6	1.2	500	86
	12	5.8	1150	380