

Series GB

Magnetic Drive Gear Pump

MICROPUMP®

When you need a low-flow pump that delivers high-performance in a small package, Series GB is an excellent solution. Series GB pumps provide precise, pulseless flow for a wide range of fluid temperatures. Featuring the patented Micropump® suction shoe design, the pumps self-compensate for wear ensuring near zero slip and a long pump life. Available in standard or custom designs, Series GB keeps your operations flowing smoothly.

Suction Shoe Style Pumps

Suction shoe style pumps self-compensate for wear, are excellent for continuous duty processes, and offer improved efficiencies when pumping at higher pressures

Small Size

The miniature package size of the Series GB is easily incorporated into the design of many systems.

Leak-Free

The magnetic drive and static o-ring seal(s) keep the fluid securely inside the pump and potential contaminants out.

Smooth Pulseless Delivery

Positive displacement, helical gears provide consistent fluid delivery in continuous processes.

Chemically Resistant

Series GB has a long-life in aggressive environments.

Easy to Service

Series GB pumps are easy to service using a Micropump service kit and simple hand tools.



Wide Range of Options and Configurations

Micropump's designs offer the flexibility to customize products to meet your more challenging requirements including:

- ▶ Two and three gear versions
- ▶ Multiple gear, body, and o-ring materials
- ▶ Optional internal bypass
- ▶ Optional high-torque magnets
- ▶ NEMA, IEC, and Micropump drive mounts

Innovative Designs

Micropump uses the latest engineering tools and manufacturing equipment to produce the most innovative pumping solutions available. Products are developed using state-of-the-art CAD, Finite Element Analysis (FEA), and rapid prototyping tools to ensure the highest level of product quality and reliability.

Enhanced Efficiency

As part of the IDEX Health & Science Group, Micropump now offers fully-integrated liquid subassemblies, gas management systems, and precision components. Products include pumps, valves, manifolds, tubing, fittings, degassing/debubbling systems, air compressors, vacuum generators, and HPLC columns. Additional services are custom fluidic engineering and development, contract manufacturing, extrusion, molding, machining, and diffusion bonding.



Precision Engineered Fluidics™

Performance Summary

Flow Rate at 5,500 rpm

- ▶ 6,435 mL/min (1.70 gpm)

Displacement

- ▶ Gear Set P23 P25 P35
- ▶ mL/rev 0.26 0.58 1.17

Maximum Rated Differential Pressure

- ▶ 125 psi (8.7 bar)

Maximum Rated System Pressure

- ▶ 300 psi (21 bar)

Temperature Range

- ▶ -46–177 °C (-50–350 °F)

Viscosity Range

- ▶ 0.2–1,500 cps

Maximum Speed

- ▶ 10,000 rpm

Pump Construction

- ▶ Magnetic drive gear pump
- ▶ Suction shoe style
- ▶ Two or three helical gears
- ▶ Stationary shafts
- ▶ O-ring seal
- ▶ Bypass optional

Wetted materials

Base material

- ▶ 316 stainless steel

Gears

- ▶ PEEK™
- ▶ PPS

Static Seals

- ▶ Viton®
- ▶ EP

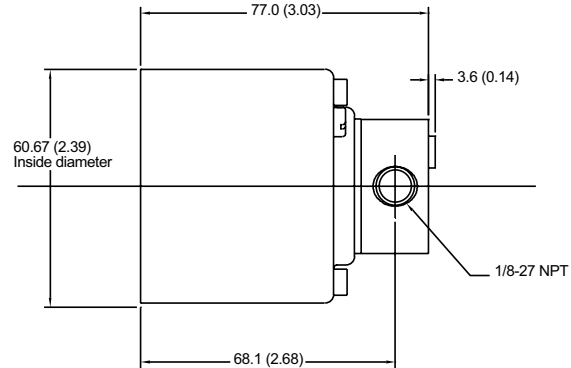
Magnets

Driven and driving

- ▶ Ferrite
- ▶ Rare earth

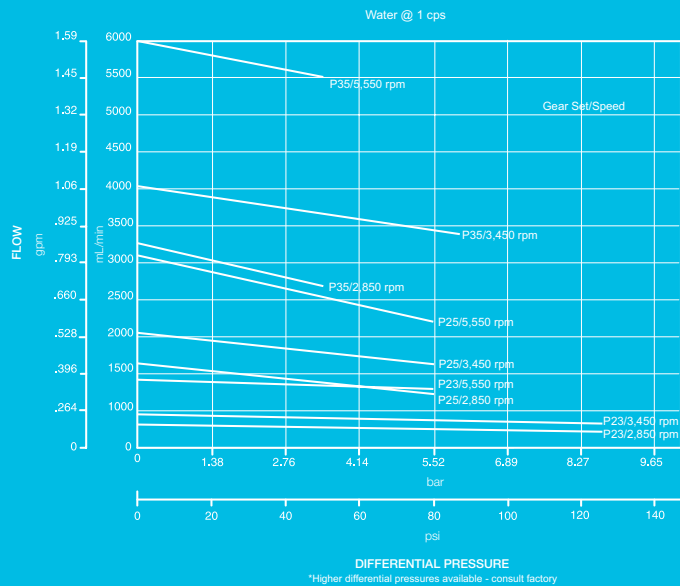
Dimensions

A-Mount



Units: mm (in.) Nominal dimensions shown.

Pump Performance



ACTUAL PERFORMANCE MAY VARY.

Specifications are subject to change without notice.

Micropump, and the Micropump logo are registered trademarks of Micropump, Inc. Precision Engineered Fluidics is a trademark of IDEX Health & Science. PEEK polymer is a trademark of Victrex plc. Viton is a registered trademark of E.I. du Pont de Nemours and Company. ©2008 Micropump, Inc., A Unit of IDEX Corporation.

Revised on 06/11/2008



Micropump, Inc • IDEX Health & Science Group
1402 NE 136th Avenue • Vancouver, WA 98684
Tel 800.671.6269 • +1.360.253.2008 • Fax +1.360.253.8294
info.micropump@idexcorp.com • www.idex-hs.com